

Orthotics Product Catalog

Bracing & Supports 2020



Quality for life



Spine 6

Thoracolumbar Sacral Orthoses (TLSO).....8
Lumbar Sacral / Lumbar Orthoses (LSO and LO).....9
Sacroiliac Orthosis (SO)16
Cervical18

Upper Extremity 20

Shoulder Braces.....22
Elbow Braces.....25
Wrist & Hand Braces27

Knee..... 30

Osteoarthritis Braces32
Post-Operative Braces34
Ligament Braces38
Patellofemoral Braces46

Foot & Ankle..... 48

Walker Boots50
Supports52
Night Splints55

Quality for life

Ottobock was founded in Germany in 1919 by Otto Bock. For 100+ years, Ottobock has been a global leader in developing high-quality prosthetic medical devices to enable patients to regain mobility and independence.

Our Orthotics portfolio of off-the-shelf bracing and supports is designed to improve functional outcomes for patients so they can resume their daily activities and active lifestyles with confidence.

To order any of our products or services, contact your local sales representative or our Customer Service team anytime.

- ▶ Ottobock US • P 800 328 4058 • F 800 962 2549
USCustomerService@ottobock.com • professionals.ottobockus.com
- ▶ Ottobock Canada • P 800 665 3327 • F 800 463 3659
CACustomerService@ottobock.com • professionals.ottobock.ca





Spine

In 2012, Ottobock acquired Cybertech Medical, a leading spine company and pioneers of the Mechanical Advantage Single Pulley System. Designed to help patients with a wide variety of chronic and acute conditions, our spinal orthoses support patients after an injury or surgery, during rehabilitation, or for everyday support.

Cyberspine™ TLSOx4

50R320N | TLSO (T2-S1) with Lateral Control



Features and Benefits

- One-hand pull system compresses and cones to individual patient anatomy
- Tool-free linear thoracic adjustment and adjustable articulating sternal pads
- Unsurpassed compression and support with a 5:1 mechanical advantage pulley system

Part no. 50R320N	Measure waist circumference.	
Size	Waist Circumference	Part Number
Universal	Up to 55"	50R320N=U
S	25"-30"	50R320N=S
M	30"-35"	50R320N=M
L	35"-40"	50R320N=L
XL	40"-45"	50R320N=XL
XXL	45"-50"	50R320N=XXL

• HCPCS Code: L0464

Fulcrum

50R153N | LSO (T9-S1) with Lateral Control



Features and Benefits

- Modular step-down system is ideal for treatment pre-op, post-op, and throughout rehabilitation
- Unsurpassed compression and support with a 6:1 mechanical advantage pulley system
- Mesh corset and breathable anterior, posterior, and lateral panels for increased patient comfort

Part no. 50R153N	Measure waist circumference.	
Size	Waist Circumference	Part Number
S	25"-30"	50R153N=S
M	30"-35"	50R153N=M
L	35"-40"	50R153N=L
XL	40"-45"	50R153N=XL
XXL	45"-50"	50R153N=XXL
XXXL	50"-55"	50R153N=XXXL

• HCPCS Codes: L0637, L0650

OPTION 1

50R218N=1 | Universal LO (L1-S1)



Features and Benefits

- Universal LO offers 5:1 compression and stabilization
- Integrated supports to stabilize the spine
- Anatomic design, adjustable straps, and pocket closure system for easy fitting

Part no. 50R218N=1	Measure waist circumference.	
Size	Waist Circumference	Part Number
Universal	25"-55"	50R218N=1
XL	Up to 65"	50R218N=1-XL

• HCPCS Codes: L0627, L0642

OPTION 2

50R218N=2 | Universal LSO (T9-S1)



Features and Benefits

- Universal LSO offers 5:1 compression and stabilization
- Breathable corset easily trims or folds to size
- Adjustable cord and heat moldable panels for customized fit

Part no. 50R218N=2	Measure waist circumference.	
Size	Waist Circumference	Part Number
Universal	25"-55"	50R218N=2
XL	Up to 65"	50R218N=2-XL

• HCPCS Codes: L0631, L0648

OPTION 3

50R218N=3 | Universal LSO (T9-S1) with Lateral Control



Features and Benefits

- Universal LSO offers 5:1 compression and stabilization with removable lateral panels
- Modular step-down system for ease of use
- Anatomic design contours to the lordosis of the spine

Part no. 50R218N=3

Measure waist circumference.

Size	Waist Circumference	Part Number
Universal	25"-55"	50R218N=3
XL	Up to 65"	50R218N=3-XL

• HCPCS Codes: L0637, L0650

Multi 627

50R319N=627 | Universal LO (L1-S1)



Features and Benefits

- Universal LO offers 6:1 compression and stabilization with rigid support
- Unique pocket system adjusts on anterior side for ease of use
- Single one-hand pull regulates compression and can be flipped to accommodate a right or left pull

Part no. 50R319N=627

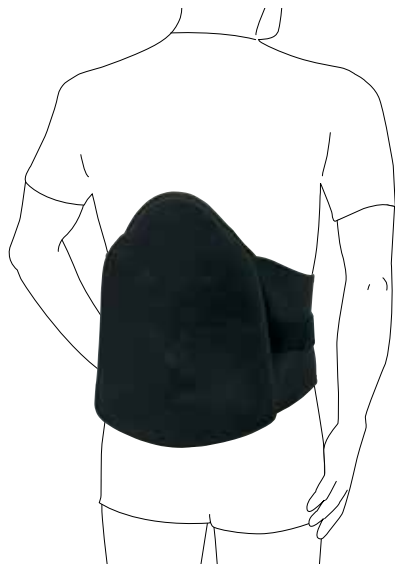
Measure waist circumference.

Size	Waist Circumference	Part Number
Universal	25-55"	50R319N=627

• HCPCS Codes: L0627, L0642

Multi 631

50R319N=631 | Universal LSO (T9-S1)



Features and Benefits

- Universal LSO offers 6:1 compression and stabilization with rigid support
- Breathable corset easily trims or folds to size
- Adjustable cord and heat moldable panels for customized fit

Part no. 50R319N=631

Measure waist circumference.

Size	Waist Circumference	Part Number
Universal	25"-55"	50R319N=631

• HCPCS Codes: L0631, L0648

Multi 637

50R319N=637 | Universal LSO (T9-S1) with Lateral Control



Features and Benefits

- Universal LSO offers 6:1 compression and stabilization with removable lateral panels
- Modular step-down system for ease of use
- Anatomic design contours to the lordosis of the spine

Part no. 50R319N=637

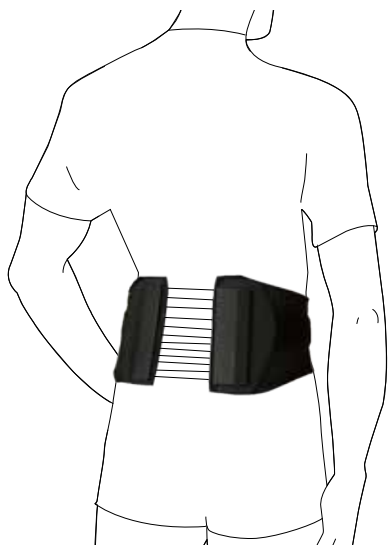
Measure waist circumference.

Size	Waist Circumference	Part Number
Universal	25"-55"	50R319N=637

• HCPCS Codes: L0637, L0650

Cybertech S.P.I.N.E. Brace

50R147N | Mechanical Advantage Corset (L1-S1)



Features and Benefits

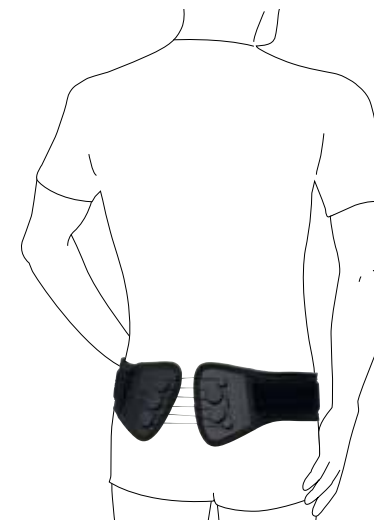
- Compression and support with a 6:1 mechanical advantage pulley system
- Rigid posterior panel provides increased support for each patient
- Standard (50R147N) and low-profile (50R142N) designs available

Part no. 50R147N		Measure waist circumference.	
Size	Waist Circumference	Part Number	
XS	25"-30"	50R147N=XS-7	
S	30"-35"	50R147N=S-7	
M	35"-40"	50R147N=M-7	
L	40"-45"	50R147N=L-7	
XL	45"-50"	50R147N=XL-7	
XXL	50"-55"	50R147N=XXL-7	
XXXL	56"-68"	50R147N=XXXL-7	

• HCPCS Code: A9270

SI Belt

50R159N | Classic SO (L5-S1)



• HCPCS Code: L0621

Features and Benefits

- Compression and support with a 5:1 mechanical advantage pulley system
- Pressure pads can be adjusted or removed for increased patient comfort
- Low-profile corset and panels for increased patient compliance

Part no. 50R159N		Measure waist circumference.	
Size	Waist Circumference	Part Number	
S	Up to 35"	50R159N=SMALL	
Standard	35"-50"	50R159N=STANDARD	
Universal	23"-50"	50R159N=U	

Cervical SOM

50C72 | Multi-Post Collar



Features and Benefits

- Two-piece system and functional design limit rotation of the cervical region and promote airflow
- Adjustable chin piece and malleable occipital panel provide a customized fit
- Unique quick adjusting straps and stops ensure the device is reapplied consistently every time

Part no. 50C72	Measure chin to sternal notch.		
Size	Chin to Shoulder	Mid-Neck Circumference	Part Number
S/M	2.5"-4"	11"-15"	50C72=S/M
L/XL	3.25"-5.25"	15"-20"	50C72=L/XL

• HCPCS Code: L0180

Smartspine Universal Collar

50C91 | Semi-Rigid Collar with Thoracic Extension



Features and Benefits

- Universally sized collar reduces inventory, storage space, and overall costs while providing long-term patient support
- Height adjusts in nine different positions using patented V.H.P (Variable Height Positioning) technology to ensure optimal patient fitting
- Vented design and breathable foam liner improve airflow and patient comfort

Part no. 50C91	Measure chin to sternal notch.	
Size	Height	Part Number
Universal	2.5"-5"	50C91

• HCPCS Code: L0174



Upper Extremity

Our off-the-shelf upper extremity portfolio of shoulder, elbow, wrist, and hand braces provides comfortable support for patients with strains, tendonitis, fractures, and more.

Omo Immobil Sling

50A8 | Shoulder Immobilizer



Features and Benefits

- Arm sling supports and immobilizes the shoulder in internal rotation for healing
- Positionable thumb grip to help maintain arm placement in the sling
- Quick-release buckles, padded neck strap, and soft material for high wearer comfort

Part no. 50A8

Measure using patient arm length (elbow to back of the hand).

Size	Arm Length	Part Number
S	11.5"-13"	50A8=S
M	13"-14.5"	50A8=M
L	14.5"-16"	50A8=L

• HCPCS Code: L3670

Omo Immobil Sling, Abduction

50A9 | Abduction Pillow Brace



Features and Benefits

- Traditional pillow design immobilizes the shoulder in 15° abduction for healing
- Medium density contoured foam pillow for comfortable positioning of the arm and hand
- Quick-release buckles, padded neck strap, and soft material for high wearer comfort

Part no. 50A9

Measure using patient arm length (elbow to back of the hand).

Size	Arm Length	Part Number
S	11.5"-13"	50A9=S
M	13"-14.5"	50A9=M
L	14.5"-16"	50A9=L

• HCPCS Code: L3670

Omo Immobil

50A10 | Shoulder Positioning Brace



Features and Benefits

- Immobilizes the shoulder in 0° to 90° abduction positions to accommodate shoulder procedures with one device
- Semi-rigid torso design prevents migration
- Adjustable shoulder strap relieves tension and stress on the neck

Part no. 50A10

Measure using patient arm length (elbow to back of the hand).

Size	Arm Length	Part Number
S	11.5"-13"	50A10=S
M	13"-14.5"	50A10=M
L	14.5"-16"	50A10=L

• HCPCS Code: L3960

Epi Forsa Plus

50A3 | Universal Epicondylitis Support



Features and Benefits

- Universal, seamless design relieves pain caused by medial or lateral epicondylitis
- Pressure point pad relieves irritated tendon insertions
- Dynamic, continuous regulation of pressure

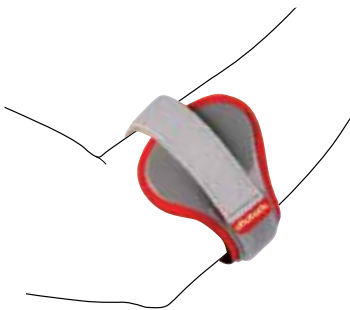
Part no. 50A3

Size	Part Number
Universal	50A3

• HCPCS Code: A4467

Epiflex

4801N | Epicondylitis Support



Features and Benefits

- Semi-rigid construction is preformed to distribute strap pressure and relieve pain from medial or lateral epicondylitis
- Pressure point pad relieves irritated tendon insertions
- Interior thermoprene padding for increased comfort and secure fit

Part no. 4801N		Measure forearm circumference.
Size	Forearm Circumference	Part Number
S	9.5"-9.8"	4801N=S
M	10.2"-10.6"	4801N=M
L	11"-11.8"	4801N=L
XL	12.2"-13"	4801N=XL

• HCPCS Code: A9270

Classic Wrist Brace

28P212 | Wrist Support



Features and Benefits

- Wrist support for immobilization of the wrist in a neutral position
- Dorsal stay for additional support and immobilization
- Soft foam laminate construction

Part no. 28P212		Measure wrist circumference.	
Size	Wrist Circumference	Left	Right
XS	5.25"-6.25"	28P212=L-XS	28P212=R-XS
S	6.25"-7.25"	28P212=L-S	28P212=R-S
M	7.25"-8"	28P212=L-M	28P212=R-M
L	8"-9"	28P212=L-L	28P212=R-L
XL	9"-10"	28P212=L-XL	28P212=R-XL

• HCPCS Code: L3908

Thumb Spica

28P211 | Classic Thumb Support



Features and Benefits

- Thumb spica for immobilization of the wrist and thumb in a neutral position
- Malleable stay on extensor surface of thumb for adjustment when needed
- Soft foam laminate construction

Part no. 28P211	Measure wrist circumference.		
Size	Wrist Circumference	Left	Right
XS	5.25"-6.25"	28P211=L-XS	28P211=R-XS
S	6.25"-7.25"	28P211=L-S	28P211=R-S
M	7.25"-8"	28P211=L-M	28P211=R-M
L	8"-9"	28P211=L-L	28P211=R-L
XL	9"-10"	28P211=L-XL	28P211=R-XL

• HCPCS Codes: L3807, L3809



Knee

Our knee braces and supports offer pain relief for knee osteoarthritis patients, and increase functionality for patients, post-injury or post-surgery.

Agilium Vantage

50K306 | Knee Osteoarthritis Brace



Features and Benefits

- Dynamic Y force strap system provides unloading to minimize rotation and reduce pain
- Single, low-profile metal upright with hinge for fixed flexion and extension limits
- Trimmable sleeves to fit a broader range of patients with three sizes to reduce inventory

Part no. 50K306

Measure leg circumferences 6" above and below mid-patella.

Size	Thigh	Calf	Left Medial	Left Lateral	Right Medial	Right Lateral
XS-S	14"-18"	11"-14"	50K306=L-XS-S-MO	50K306=L-XS-S-LO	50K306=R-XS-S-MO	50K306=R-XS-S-LO
M-L	18"-23.5"	14"-18"	50K306=L-M-L-MO	50K306=L-M-L-LO	50K306=R-M-L-MO	50K306=R-M-L-LO
XL-3XL	23.5"-32"	18"-24"	50K306=L-XL-3XL-MO	50K306=L-XL-3XL-LO	50K306=R-XL-3XL-MO	50K306=R-XL-3XL-LO

● HCPCS Codes: L1843, L1851

Agilium Reactive

50K324 | Knee Osteoarthritis Brace



Features and Benefits

- Universal sizing and auto-adaptive cuffs fit a broad range of patients
- Lateral joint avoids interference with the unaffected leg regardless of medial or lateral indications
- Anti-migration tibial pad maximizes contact with the tibia to help limit migration

Part no. 50K324

Measure leg circumferences 6" above and below mid-patella.

Size	Thigh	Calf	Left	Right
Universal	15"-31.5"	12"-23.5"	50K324=L-1-US	50K324=R-1-US

● HCPCS Codes: L1843, L1851

Telescoping Post-Op Brace, Cool

50K204 | Range of Motion Knee Brace



Features and Benefits

- ROM brace with cool, open design limits motion between 0° to 120° and locks between 0° and 45°
- Telescoping cuffs avoid incision sites for individualized fitting and increased patient comfort
- Packaged for quick and easy application in an operating or recovery room setting

Part no. 50K204	Measure leg circumferences 6" above and below mid-patella.	
Size	Thigh Circumference	Part Number
Universal	Up to 36"	50K204

● HCPCS Codes: L1832, L1833

Telescoping Post-Op Brace, Premium

50K205 | Range of Motion Knee Brace



Features and Benefits

- ROM brace with premium, full-foam design limits motion between 0° to 120° and locks between 0° and 45°
- Telescoping cuffs avoid incision sites for individualized fitting and increased patient comfort
- Silicone grip foam and malleolus suspension ensure the brace maintains proper positioning for healing

Part no. 50K205	Measure leg circumferences 6" above and below mid-patella.	
Size	Thigh Circumference	Part Number
Universal	Up to 36"	50K205

● HCPCS Codes: L1832, L1833

Telescoping Post-Op Brace, Short, Cool

50K241 | Range of Motion Knee Brace



Features and Benefits

- Short ROM brace with cool, open design limits motion between 0° to 120° and locks between 0° and 45°
- Telescoping cuffs avoid incision sites for individualized fitting and increased patient comfort
- Buckle closures ease donning and doffing

Part no. 50K241	Measure leg circumferences 6" above and below mid-patella.	
Size	Thigh Circumference	Part Number
Universal	Up to 36"	50K241

● HCPCS Codes: L1832, L1833

Genu Immobil

8060 | Knee Immobilizer



● HCPCS Code: L1830

Features and Benefits

- Three panel design allows for anatomical placement of medial and lateral stays with 0° and 20° positioning options
- Malleable stays can be contoured to fit the leg and hold in full extension
- Patella strap secures brace in place

Part no. 8060	Measure leg circumferences 6" above and below mid-patella.				
	Size	Circumference		0°	20°
		Thigh	Calf		
	S	11.4"-12.6"	13.8"-23.6"	8060=S-7	8062=S-7
	M	16.1"-17.3"	13.8"-23.6"	8060=M-7	8062=M-7
	L	17.3"-18.9"	15"-26"	8060=L-7	8062=L-7
	XL	18.9"-20.1"	15"-26"	8060=XL-7	8062=XL-7

X-LTE Ligament Brace

50K301 | Ligament Knee Brace



Features and Benefits

- Anatomically correct hinges track with the knee joint through flexion and extension
- Silicone padding on the calf shell grips the skin and prevents migration, while soft durable foam pads the thigh shell
- Anterior shell design and simplified strapping ease application

Part no. 50K301	Measure leg circumferences 6" above and below mid-patella.					
	Size	Circumference			Left	Right
		Thigh	Knee Center	Calf		
	S	15.5"-18.5"	11"-12.5"	12.25"-13.75"	50K301=L-S-7-2	50K301=R-S-7-2
	M	18.5"-21"	12.5"-14"	13.25"-15"	50K301=L-M-7-2	50K301=R-M-7-2
	L	21"-23.5"	14"-15.25"	14.25"-15.75"	50K301=L-L-7-2	50K301=R-L-7-2
	XL	23.5"-25"	15.25"-16.5"	15"-17"	50K301=L-XL-7-2	50K301=R-XL-7-2

● HCPCS Codes: L1845, L1852

X-PRO Ligament Brace

50K302 | Ligament Knee Brace



Features and Benefits

- Anatomically correct hinges track with the knee joint through flexion and extension
- Flexible proximal and distal cuffs ease field fitting and flexion during activity for improved fit and comfort
- Internally mounted calf straps hug the leg above the calf muscle to prevent migration

Part no. 50K302	Measure leg circumferences 6" above and below mid-patella.					
	Size	Circumference			Left	Right
		Thigh	Knee Center	Calf		
	S	15.5"-18.5"	11"-12.5"	12.25"-13.75"	50K302=L-S-7-2	50K302=R-S-7-2
	M	18.5"-21"	12.5"-14"	13.25"-15"	50K302=L-M-7-2	50K302=R-M-7-2
	L	21"-23.5"	14"-15.25"	14.25"-15.75"	50K302=L-L-7-2	50K302=R-L-7-2
	XL	23.5"-25"	15.25"-16.5"	15"-17"	50K302=L-XL-7-2	50K302=R-XL-7-2

● HCPCS Codes: L1845, L1852

Xeleton

50K30 | Ligament Knee Brace



● HCPCS Codes: L1845, L1852

Features and Benefits

- Low-profile and durable polycentric hinges
- Durable and flexible shell design can be contoured for improved fit and comfort
- Technogel® condyle pads provide three-dimensional pressure distribution

Part no. 50K30	Measure leg circumferences 6" above and below mid-patella.				
	Thigh Circumference	Standard		Combined Instability (PCL)	
Size		Left	Right	Left	Right
XS	13"-15.5"	50K30=L-XS-7-2	50K30=R-XS-7-2	50K30=L-XS-7-2-C	50K30=R-XS-7-2-C
S	15.5"-18.5"	50K30=L-S-7-2	50K30=R-S-7-2	50K30=L-S-7-2-C	50K30=R-S-7-2-C
M	18.5"-21"	50K30=L-M-7-2	50K30=R-M-7-2	50K30=L-M-7-2-C	50K30=R-M-7-2-C
L	21"-23.5"	50K30=L-L-7-2	50K30=R-L-7-2	50K30=L-L-7-2-C	50K30=R-L-7-2-C
X	23.5"-26.5"	50K30=L-XL-7-2	50K30=R-XL-7-2	50K30=L-XL-7-2-C	50K30=R-XL-7-2-C
XXL	26.5"-29.5"	50K30=L-XXL-7-2	50K30=R-XXL-7-2	50K30=L-XXL-7-2-C	50K30=R-XXL-7-2-C
XXXL	29.5"-31.5"	50K30=L-XXXL-7-2	50K30=R-XXXL-7-2	50K30=L-XXXL-7-2-C	50K30=R-XXXL-7-2-C

Suspension Sleeve

29K193 | Use with Ligament Knee Braces



● HCPCS Code: L2397

Features and Benefits

- Soft material with one-direction grip reduces migration
- Ideal for activities where the leg is consistently placed in deep flexion
- Great to pair with ligament knee braces for additional comfort and support

Part no. 29K193	Measure leg circumferences 6" above and below mid-patella.		
	Size	Thigh Circumference	Part Number
	XS/S	13"-18.5"	29K193=XS/S
	M/L/XL	18.5"-26.5"	29K193=M/L/XL
	XXL/XXXL	26.5"-31.5"	29K193=XXL/XXXL

Genu Direxa

8356 | Hinged Knee Brace



Features and Benefits

- Lightweight aluminium splints and polycentric joints provide stability without limiting movement
- Optimal pull-on design improves neuromuscular function with targeted compression
- Innovative TriTech material offers secure fit and wearer comfort

Part no. 8356	Measure leg circumferences 6" above and below mid-patella.			
	Size	Circumference		Part Number
		Thigh	Calf	Pull-On
	XXS	14.2"-15.8"	11.4"-12.6"	8356=XXS-7
	XS	15.8"-17.3"	12.6"-13.8"	8356=XS-7
	S	17.3"-18.9"	13.8"-15"	8356=S-7
	M	18.9"-20.5"	15"-16.1"	8356=M-7
	L	20.5"-22"	16.1"-17.3"	8356=L-7
	XL	22"-24"	17.3"-18.9"	8356=XL-7
	XXL	24"-26.4"	18.9"-20.1"	8356=XXL-7

● HCPCS Codes: L1810, L1812

Genu Direxa, Wraparound

8353 | Hinged Knee Brace



Features and Benefits

- Lightweight aluminium splints and polycentric joints provide stability without limiting movement
- Optimal wraparound design improves neuromuscular function with targeted compression
- Innovative TriTech material offers secure fit and wearer comfort

Part no. 8353	Measure leg circumferences 6" above and below mid-patella.			
	Size	Circumference		Part Number
		Thigh	Calf	Wraparound
	XXS	14.2"-15.8"	11.4"-12.6"	8353=XXS-7
	XS	15.8"-17.3"	12.6"-13.8"	8353=XS-7
	S	17.3"-18.9"	13.8"-15"	8353=S-7
	M	18.9"-20.5"	15"-16.1"	8353=M-7
	L	20.5"-22"	16.1"-17.3"	8353=L-7
	XL	22"-24"	17.3"-18.9"	8353=XL-7
	XXL	24"-26.4"	18.9"-20.1"	8353=XXL-7

● HCPCS Codes: L1810, L1812

Genu Direxa Stable

8359 | Range of Motion Hinged Knee Brace



Features and Benefits

- Pull-on design with four elastic, circumferential straps for optimum fit and support
- Wide aluminium splints, polycentric joints, and concealed joint bars suitable for contact sports
- Innovative TriTech material offers secure fit and wearer comfort

Part no. 8359 Measure leg circumferences 6" above and below mid-patella.

Size	Circumference		Part Number
	Thigh	Calf	Pull-On
XXS	14.2"-15.8"	11.4"-12.6"	8359=XXS-7
XS	15.8"-17.3"	12.6"-13.8"	8359=XS-7
S	17.3"-18.9"	13.8"-15"	8359=S-7
M	18.9"-20.5"	15"-16.1"	8359=M-7
L	20.5"-22"	16.1"-17.3"	8359=L-7
XL	22"-24"	17.3"-18.9"	8359=XL-7
XXL	24"-26.4"	18.9"-20.1"	8359=XXL-7

• HCPCS Codes: L1832, L1833

Genu Direxa Stable, Wraparound

8368 | Range of Motion Hinged Knee Brace



Features and Benefits

- Wraparound design with four elastic, circumferential straps for optimum fit and support
- Wide aluminum splints and polycentric joints for stability of the knee with movement limitation
- Concealed joint bars suitable for contact sports

Part no. 8368 Measure leg circumferences 6" above and below mid-patella.

Size	Circumference		Part Number
	Thigh	Calf	Wraparound
XXS	14.2"-15.8"	11.4"-12.6"	8368=XXS-7
XS	15.8"-17.3"	12.6"-13.8"	8368=XS-7
S	17.3"-18.9"	13.8"-15"	8368=S-7
M	18.9"-20.5"	15"-16.1"	8368=M-7
L	20.5"-22"	16.1"-17.3"	8368=L-7
XL	22"-24"	17.3"-18.9"	8368=XL-7
XXL	24"-26.4"	18.9"-20.1"	8368=XXL-7

• HCPCS Codes: L1832, L1833

Patella Pro

8320N | Patella Subluxation Brace



Features and Benefits

- Dynamic patella realignment for anterior knee pain
- Auto-adaptive splints enable customized position on the patella to correct tracking at all flexion angles
- Slim, lightweight design and slip-free fabric for wearer comfort

Part no. 8320N	Measure leg circumferences 6" above and below mid-patella.				
	Size	Circumference		Left	Right
		Thigh	Calf		
	XXS	14.2"-15.8" (36-40cm)	11.4"-12.6" (29-32cm)	8320N=L-XXS	8320N=R-XXS
	XS	15.8"-17.3"	12.6"-13.8"	8320N=L-XS	8320N=R-XS
	S	17.3"-18.9"	13.8"-15"	8320N=L-S	8320N=R-S
	M	18.9"-20.5"	15"-16.1"	8320N=L-M	8320N=R-M
	L	20.5"-22"	16.1"-17.3"	8320N=L-L	8320N=R-L
	XL	22"-24"	17.3"-18.9"	8320N=L-XL	8320N=R-XL
	XXL	24"-25.6"	18.9"-20.5"	8320N=L-XXL	8320N=R-XXL

● HCPCS Codes: L180, L1812



Foot and Ankle

Our functional foot and ankle braces are designed to relieve pain and provide stability for fractures, sprains, soft tissue injuries, and more.

Malleo Immobil Air Walker

50S12-1 | Walker Boot



Features and Benefits

- Durable construction to immobilize the foot and ankle for healing
- Integrated pneumatic pump for adjustment of compression and stability
- Low-profile rocker bottom promotes a physiological gait

Part no. 50S12-1 Measure using shoe size.

Size	Shoe Size		Part Number
	Men's	Women's	
S	4.5-7	6-8	50S12-1=S
M	7.5-10.5	8.5-11.5	50S12-1=M
L	10.5-12.5	11.5-13.5	50S12-1=L
XL	12.5+	13.5+	50S12-1=XL

● HCPCS Code: L4361

Malleo Immobil Air Walker Low

50S14-1 | Walker Boot



Features and Benefits

- Durable construction to immobilize the foot and ankle for healing
- Integrated pneumatic pump for adjustment of compression and stability
- Low-profile rocker bottom promotes a physiological gait

Part no. 50S14-1 Measure using shoe size.

Size	Shoe Size		Part Number
	Men's	Women's	
S	4.5-7	6-8	50S14-1=S
M	7.5-10.5	8.5-11.5	50S14-1=M
L	10.5-12.5	11.5-13.5	50S14-1=L
XL	12.5+	13.5+	50S14-1=XL

● HCPCS Code: L4361

Malleo Direxa Stirrup

50S9 | Ankle Stirrup



Features and Benefits

- Traditional stirrup design provides compression and promotes circulation to reduce swelling
- Anatomically designed medial and lateral shells fit easily into any shoe
- Foam and gel pads included for combined cold therapy

Part no. 50S9

Size

Universal

Part Number

50S9

● HCPCS Code: L4350

Malleo Arexa

7772 | Hinged Ankle Brace



Features and Benefits

- Traditional hinged ankle support provides inversion and eversion control without limiting plantar flexion and dorsiflexion
- Adjustable stabilizing strap for increased support
- Low-profile design easily fits into any shoe

Part no. 7772

Measure using shoe size.

Size	Shoe Size		Part Number
	Men's	Women's	
M	up to 7.5	up to 7.5	7772=M
L	8-12.5	8-12.5	7772=L

● HCPCS Code: L1906

Malleo Sprint

50S3 | Lace-Up Ankle Support



Features and Benefits

- Semi-rigid construction and figure 8 design mimics traditional ankle taping to lock the calcaneus and prevent unwanted movements
- Improved design eliminates seams under the foot for improved comfort and durability
- Breathable, mesh construction and reinforced eyelets for long-term wear

Part no. 50S3

Measure using shoe size.

Size	Shoe Size		Part Number
	Men's	Women's	
XS	6-7	5-6	50S3=XS
S	7.5-9	6.5-8	50S3=S
M	9.5-11	8.5-12	50S3=M
L	11.5-13	12.5-14	50S3=L
XL	13.5-15	14+	50S3=XL

● HCPCS Code: L1902

Dynamic Night Splint

50S21 | Dorsal Plantar Fasciitis Support



Features and Benefits

- Hinged dorsal design adjusts and stretches the foot to aid in nighttime healing
- Adjustable anterior tension straps for varying degrees of dorsiflexion
- Soft, double-padded foam reduces pressure points

Part no. 50S21

Measure using shoe size.

Size	Shoe Size		Part Number
	Men's	Women's	
S/M	4.5-10.5	6-11.5	50S21=S/M
L/XL	10.5+	11.5+	50S21=L/XL

● HCPCS Code: L4397

Dorsal Night Splint

50S22 | Dorsal Plantar Fasciitis Support



Features and Benefits

- Static splint maintains foot in a dorsiflexed position to aid in nighttime healing
- Dorsal design yields higher patient compliance
- Soft foam for wearer comfort

Part no. 50S22

Measure using shoe size.

Size	Shoe Size		Part Number
	Men's	Women's	
S/M	4.5-10.5	6-11.5	50S22=S/M
L/XL	10.5+	11.5+	50S22=L/XL

● HCPCS Code: L4398

Malleo Immobil Night Splint

50S20-1 | Posterior Plantar Fasciitis Support



Features and Benefits

- Traditional posterior design and angled shell stretches the foot to aid in nighttime healing
- Medial and lateral straps tension for increased support
- Soft foam liner and strap pads for wearer comfort

Part no. 29S20

Measure using shoe size.

Size	Shoe Size		Part Number
	Men's	Women's	
S	Up to 4.5	Up to 6.5	50S20-1=S
M	5-9	7-11	50S20-1=M
L	9.5+	11.5+	50S20-1=L

● HCPCS Code: L4397

